



>| innShock

The Horizontal Impact Tester evaluates the strength and consistency of loads to withstand sudden impacts. With its advanced design and programmer, it allows you to customize the impact pulse. This testing is crucial for simulating real-world scenarios such as sudden braking, rapid accelerations, and abrupt movements, ensuring products are resilient under various conditions.

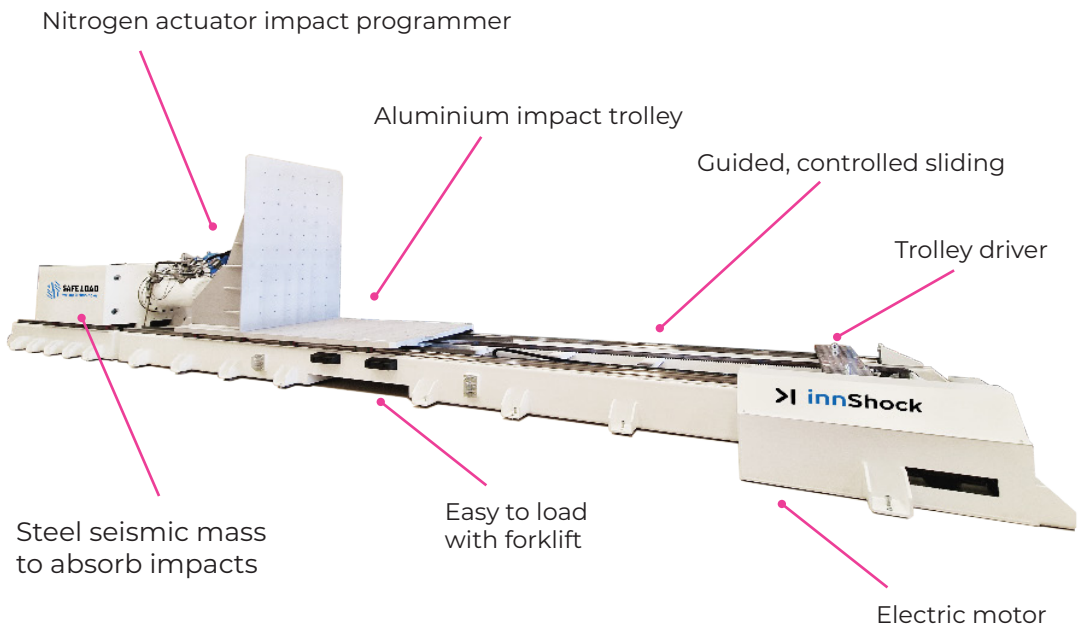


Image: HIE1500

Perform controlled, high-intensity shocks to demonstrate the resistance of the unit load.

Simulate impact hazards occurring in several sectors.

Provide valuable insights into optimal product transportation resilience.

Minimize losses and costs thanks to optimized packaging.

Industries



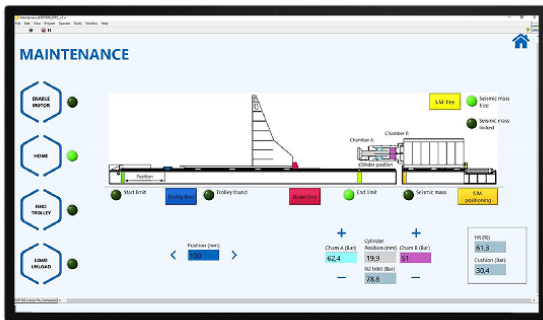


Image: Controller HIE1500



Image: Controller HIE1500

Technical specifications

- Independent impact controller
- Seismic mass for impact absorption
- Automatic test report generation
- Intuitive controller
- Pneumatic and electric machine
- Sine, half-sine and optional trapezoidal pulses

Impact Tests supported

- ASTM D4169
- ASTM D880-92
- ASTM D4003
- ISTA Procedures 1A, 1B, 1C, 1D, 1E, 1G 1H; 2A, 2B, 2C; 3B, 3E, 3H, 3K, 3L; 4 Series; 6-SAMSLUB; 6-AMAZON-SIOC.COM
- MIL-STD-810
- ISO 2244
- EN 15552:2008

Optional accessories

- ISO 8611 Hazards for pallets
- Temperature and humidity sensor
- Impact trolley with speed sensor

innData

innVision

- innVision ST
- innVision PRO

Model	Max. Load Weight		Impact Trolley Size		Impact speed	
	kg	lbs	mm	in	m/s	ft/sec
HIE1000	1000	2204	1500 x 1500	59 x 59	3.6	11.8
HIE1500	1500	3306				
HIE2000	2000	4409				
HIE2500	2500	5512				

Europe Headquarters

C/Velluters 1, nave 9.
46980 Paterna - Valencia (Spain)

Office: +34 963929595
Sales: +34 689797409 / +34 672387614
Email: contact@safeloadtesting.com

www.safeloadtesting.com

America Headquarters

120 NE 27TH STREET #900
Miami, FL 33132 (USA)

Tech Support: +1 773 692 6363
Sales: +1 909-996-7442 / +1 813-815-2419
Email: contact@safeloadtesting-usa.com

www.safeloadtesting-usa.com